

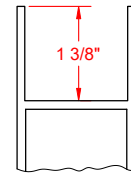
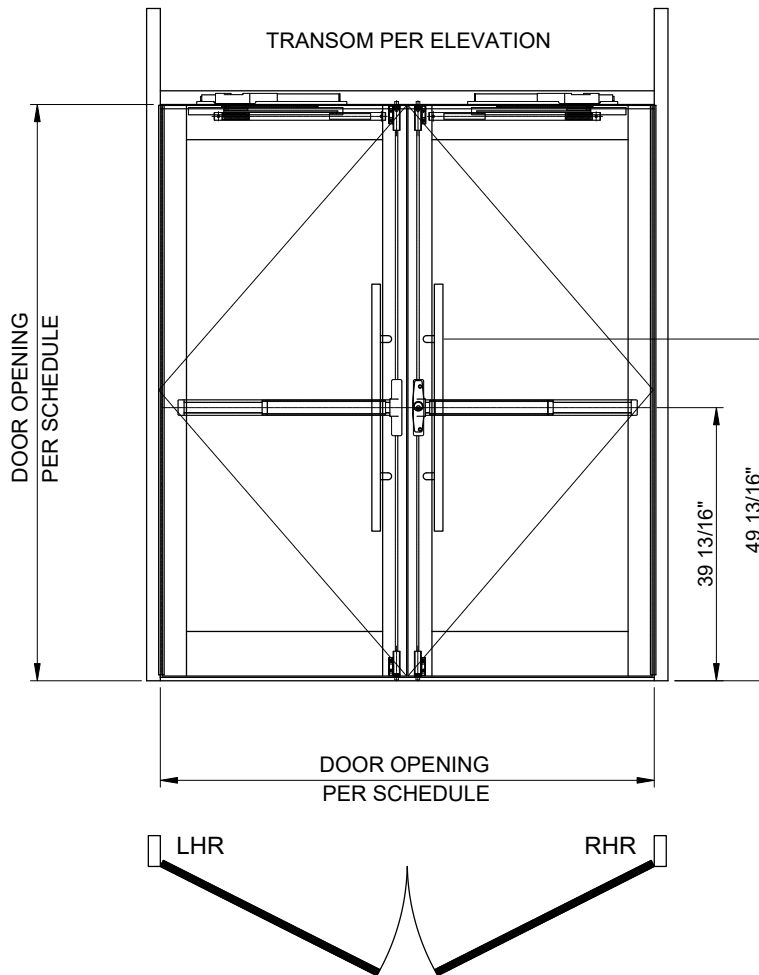
Customer Approval Form

Hardware Set #: AL-01

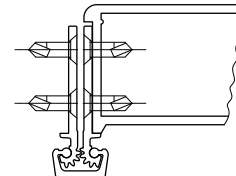
Doors: 1154B, 1154C, 1154A

Door Thickness: 1.750
 Door Height x Width: 108.000 x 72.000
 Rail Height Top / Bottom: 0.000 / 0.000
 Web Depth Top / Bottom: 1.375 / 1.375
 Stile Width: Medium

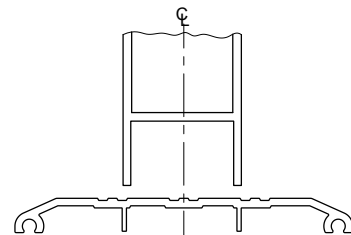
Qty	Item Description	Part Number	Finish	Manufacturer
6	Continuous Hinge	SL11 HD x 107	628	SL
3	Exit Device CVR	3547A-EO-3'	626	VD
3	Exit Device CVR	3547A-NL-OP-3'	626	VD
3	Cylinder Rim	R200SCC	626	LSDA
6	Pull Handle	9264F-36 x 36" - 20" CTC	630	IVE
6	OH Stop Surface	904S	630	GJ
6	Closer Concealed Overhead	2034 x STD	689	LCN
3	Threshold	425 x 72"	MILL	NGP



MINIMUM TOP RAIL WEB DEPTH



RABBETED STILE REQUIRED



THRESHOLD

Customer Approval

Information verified by customer and acknowledged by signature.



Project Name

DATE: 6/19/2020
 SHEET: 1 of 6